

Giclee Print Care Instructions

These care instructions are designed to provide basic guidelines that will help you care for your fine art reproductions. Your purchase is an investment to be enjoyed for generations. Please read the following carefully.

Handling

Always handle prints with clean hands, avoid touching the surface of the print. Avoid creasing loose prints. Keep handling to a minimum during the hanging process and hold only from the sides.

Storing

Place acid-free paper on both front and back. Do not store in a damp environment. Do not store on the floor, wood shelves are preferable to metal for better air circulations.

Heat

Do not hang, store, or place your artwork close to any heating element. Do not hang your print(s) over a fireplace. Heat and smoke can damage your art in a short period of time.

Lighting Conditions

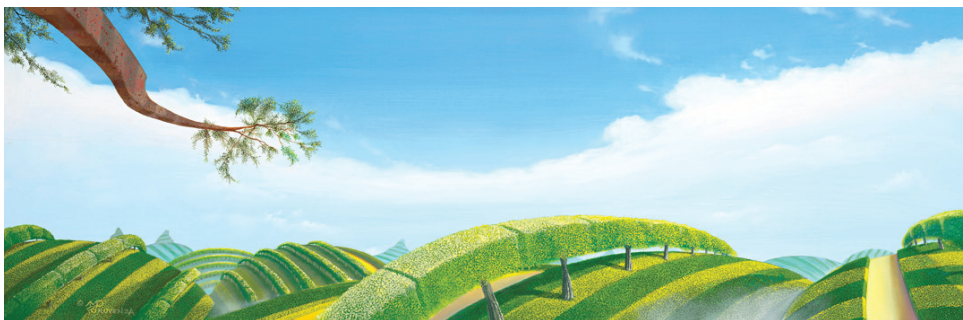
It is recommended that you DO NOT hang your Giclee prints in direct sunlight. At present only Giclee on Canvas reproductions come with UV protective coatings. Less light means less fading, avoid reflected light and harmful ultraviolet rays.

Environment

It is recommended that you keep your Giclee prints in a relatively controlled environment. Repeated exposure to extreme and/or sudden changes in humidity or temperature can have an adverse effect on the longevity of your artwork surface and substrate materials.

Cleaning

DO NOT wash printed surfaces with water, or solvents. For cleaning we recommend using a clean dry soft lint-free cloth to gently wipe off dust and/or dirt. Avoid cleaning with a dirty cloth. It is acceptable to gently wipe the printed surface with a soft cloth that has been dampened with water. It is recommended to do this only when absolutely necessary.



"Reach" (oil) 36" x 12" ©2011 Michael Provenza. All Rights Reserved.

ThreeTrees Studio, LLC Disclaimer

Original art and prints fade depending on where they are displayed. Under normal lighting conditions in a home or office at about 450 lumens, a Giclee print should last thirty years or more.

However, displayed under intense art gallery light conditions of sometimes 6000 lumens or more or in direct sunlight, any print will fade, be it a Giclée print, a serigraph, a lithograph, or even an original. Therefore ThreeTrees Studio, LLC will not be responsible for any returns with prints displayed under abnormal lighting conditions.

ThreeTrees Studio, LLC will also NOT be responsible for:

- (1) any prints damaged by the framer or prints that have been abused during the framing process;
- (2) any prints that have been scratched or abused after they left ThreeTrees Studio;
- (3) any prints that have come in contact with cleaning fluids or other liquid substances; and,
- (4) any prints with dust spots or natural blemish characteristics of the canvas smaller than 1/8 inch in diameter or printing spit-ups smaller than 1/8 inch in diameter.

Michael Provenza

Artist and Partner
ThreeTrees Studio, LLC
419.704.4870
mjprovenza@threetreesstudio.com

Gallery and Studio

www.MichaelProvenza.com
www.ThreeTreesStudio.com

 Follow Me
@MProvenzaArtist

 Like Me
@Michael.Provenza.Artist